

Features

- Spacious shower base offers ample room for showering.
- Safeguard® slip-resistant surface on bath floor.
- Single threshold for alcove installation with three tile-in flanges.
- KOHLER® enameled cast iron.

Installation

- Right drain.

Recommended Products/Accessories

K-9132 Shower Drain
K-1733 9 kW Steam Generator
K-702206-G73 Frameless Sliding Shower Door
K-702207-L Frameless Sliding Shower Door
K-706009-D3 Frameless Sliding Shower Door
K-706009-L Frameless Sliding Shower Door
K-706012-L Frameless Sliding Shower Door
K-706013-L Frameless Sliding Shower Door
K-706015-D3 Frameless Sliding Shower Door
K-706015-L Frameless Sliding Shower Door
K-706019-L Frameless Sliding Shower Door
K-5526 7 kW Steam Generator
K-5557 steam generator control kit
K-23726 Drain treatment
K-23725 Cast iron cleaner



Codes/Standards




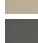


ASME A112.19.1/CSA B45.2
ASTM F462

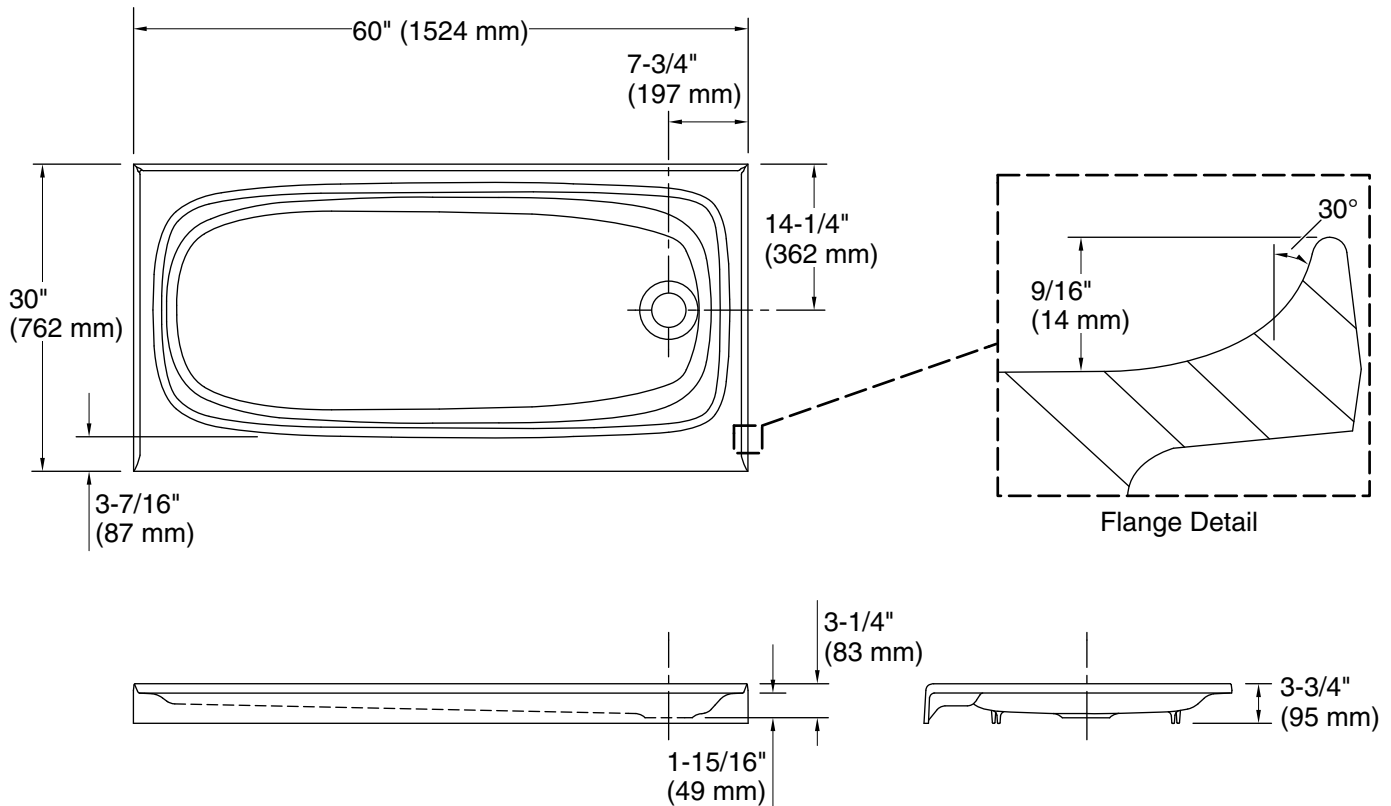
KOHLER® Enameled Cast Iron Bath and Shower Base Lifetime Limited Warranty

See website for detailed warranty information.

Available Colors/Finishes

Color tiles intended for reference only.

Color	Code	Description
	0	White
	96	Biscuit
	NY	Dune
	33	Mexican Sand™
	58	Thunder™ Grey
	7	Black Black™



Technical Information

All product dimensions are nominal.

Installation:	Three-wall alcove
Drain location:	Right
Weight:	193 lbs (87.5 kg)
Minimum floor load:	40 lbs/ft ² (195.3 kg/m ²)

Notes

Measure your actual product for rough-in details.

Install this product according to the installation instructions.

KOHLER steam generator/control kit is designed for use with this product. Kohler Co. shall not be responsible for problems encountered due to the installation and use of other manufacturer's steam generators.